

## WERRIS CREEK COAL EPL – MONTHLY SUMMARY

### Site Information

**EPL No.:** 12290

**EPA Website Link:** <http://www.epa.nsw.gov.au/prpoeoapp/ViewPOEOLicence.aspx?DOCID=31280&SYSUID=1&LICID=12290>

**Licensee:** Werris Creek Coal Pty Limited

**Premises:** Werris Creek Coal, 1435 Werris Creek Road, WERRIS CREEK NSW 2341

**EPL Monitoring Points:** See figure at end of document

**Sampling Period:** JANUARY 2024

**Obtained Date:** 26/02/2024

**Publication Date:** 29/02/2024

**Table 1 - No Pollutant Limits Apply**

EPL ID	Pollutant	Units of Measure	Monitoring Frequency	No. of Measurements for the Month	Date Sampled	Date Obtained	Min Value	Mean Value	Median Value	Max Value
28	PM10	µg/m <sup>3</sup>	Every 6 days	6	30/01/2024	23/02/2024	3.5	4.3	4.2	5.0
	Solid Particles	g/m <sup>2</sup> /month	Continuous	1	18/01/2024	31/01/2024	0.6	0.6	0.6	0.6
29	PM10	µg/m <sup>3</sup>	Every 6 days	6	31/12/2023	23/01/2024	3.2	6.2	6.7	8.3
	Solid Particles	g/m <sup>2</sup> /month	Continuous	1	18/01/2024	31/01/2024	0.7	0.7	0.7	0.7
30	PM10	µg/m <sup>3</sup>	Continuous	Continuous	31/01/2024	6/02/2024	5.0	9.9	8.6	20.6
	Solid Particles	g/m <sup>2</sup> /month	Continuous	1	18/01/2024	31/01/2024	0.2	0.2	0.2	0.2
10	Conductivity	µS/cm	Special Frequency 1	0*	-	-	-	-	-	-
	Nitrate	mg/L	Special Frequency 1	0*	-	-	-	-	-	-
	Nitrogen (Total)	mg/L	Special Frequency 1	0*	-	-	-	-	-	-
	Phosphorus (Total)	mg/L	Special Frequency 1	0*	-	-	-	-	-	-
	Reactive Phosphorus	mg/L	Special Frequency 1	0*	-	-	-	-	-	-
12	Conductivity	µS/cm	Special Frequency 1	1	04/01/2024	16/01/2024	912	912	912	912
	Nitrate	mg/L	Special Frequency 1	1	04/01/2024	16/01/2024	0.11	0.11	0.11	0.11
	Nitrogen (Total)	mg/L	Special Frequency 1	1	04/01/2024	16/01/2024	0.6	0.6	0.6	0.6
	Phosphorus (Total)	mg/L	Special Frequency 1	1	04/01/2024	16/01/2024	0.16	0.16	0.16	0.16
	Reactive Phosphorus	mg/L	Special Frequency 1	1	04/01/2024	16/01/2024	0.14	0.14	0.14	0.14

**WERRIS CREEK COAL EPL – MONTHLY SUMMARY**

EPL ID	Pollutant	Units of Measure	Monitoring Frequency	No. of Measurements for the Month	Date Sampled	Date Obtained	Min Value	Mean Value	Median Value	Max Value
12	Conductivity	µS/cm	Special Frequency 1	1	22/01/2024	26/02/2024	829	829	829	829
	Nitrate	mg/L	Special Frequency 1	1	22/01/2024	26/02/2024	0.79	0.79	0.79	0.79
	Nitrogen (Total)	mg/L	Special Frequency 1	1	22/01/2024	26/02/2024	1.1	1.1	1.1	1.1
	Phosphorus (Total)	mg/L	Special Frequency 1	1	22/01/2024	26/02/2024	0.01	0.01	0.01	0.01
	Reactive Phosphorus	mg/L	Special Frequency 1	1	22/01/2024	26/02/2024	<0.01	<0.01	<0.01	<0.01
14	Conductivity	µS/cm	Special Frequency 1	0*	-	-	-	-	-	-
	Nitrate	mg/L	Special Frequency 1	0*	-	-	-	-	-	-
	Nitrogen (Total)	mg/L	Special Frequency 1	0*	-	-	-	-	-	-
	Phosphorus (Total)	mg/L	Special Frequency 1	0*	-	-	-	-	-	-
	Reactive Phosphorus	mg/L	Special Frequency 1	0*	-	-	-	-	-	-
32	Conductivity	µS/cm	Special Frequency 1	0*	-	-	-	-	-	-
	Nitrate	mg/L	Special Frequency 1	0*	-	-	-	-	-	-
	Nitrogen (Total)	mg/L	Special Frequency 1	0*	-	-	-	-	-	-
	Oil and Grease	mg/L	Special Frequency 1	0*	-	-	-	-	-	-
	pH	pH	Special Frequency 1	0*	-	-	-	-	-	-
	Phosphorus (Total)	mg/L	Special Frequency 1	0*	-	-	-	-	-	-
	Reactive Phosphorus	mg/L	Special Frequency 1	0*	-	-	-	-	-	-
23	Total Suspended Solids	mg/L	Special Frequency 1	0*	-	-	-	-	-	-
	Conductivity	µS/cm	Special Frequency 2	0*	-	-	-	-	-	-
	Nitrate	mg/L	Special Frequency 2	0*	-	-	-	-	-	-
	Nitrogen (Total)	mg/L	Special Frequency 2	0*	-	-	-	-	-	-
	Oil and Grease	mg/L	Special Frequency 2	0*	-	-	-	-	-	-
	pH	pH	Special Frequency 2	0*	-	-	-	-	-	-
	Phosphorus (Total)	mg/L	Special Frequency 2	0*	-	-	-	-	-	-
23	Reactive Phosphorus	mg/L	Special Frequency 2	0*	-	-	-	-	-	-

**WERRIS CREEK COAL EPL – MONTHLY SUMMARY**

EPL ID	Pollutant	Units of Measure	Monitoring Frequency	No. of Measurements for the Month	Date Sampled	Date Obtained	Min Value	Mean Value	Median Value	Max Value
	Total Suspended Solids	mg/L	Special Frequency 2	0*	-	-	-	-	-	-
24	Conductivity	µS/cm	Special Frequency 2	0*	-	-	-	-	-	-
	Nitrate	mg/L	Special Frequency 2	0*	-	-	-	-	-	-
	Nitrogen (Total)	mg/L	Special Frequency 2	0*	-	-	-	-	-	-
	Oil and Grease	mg/L	Special Frequency 2	0*	-	-	-	-	-	-
	pH	pH	Special Frequency 2	0*	-	-	-	-	-	-
	Phosphorus (Total)	mg/L	Special Frequency 2	0*	-	-	-	-	-	-
	Reactive Phosphorus	mg/L	Special Frequency 2	0*	-	-	-	-	-	-
25	Total Suspended Solids	mg/L	Special Frequency 2	0*	-	-	-	-	-	-
	Conductivity	µS/cm	Special Frequency 2	0*	-	-	-	-	-	-
	Nitrate	mg/L	Special Frequency 2	0*	-	-	-	-	-	-
	Nitrogen (Total)	mg/L	Special Frequency 2	0*	-	-	-	-	-	-
	Oil and Grease	mg/L	Special Frequency 2	0*	-	-	-	-	-	-
	pH	pH	Special Frequency 2	0*	-	-	-	-	-	-
	Phosphorus (Total)	mg/L	Special Frequency 2	0*	-	-	-	-	-	-
26	Reactive Phosphorus	mg/L	Special Frequency 2	0*	-	-	-	-	-	-
	Total Suspended Solids	mg/L	Special Frequency 2	0*	-	-	-	-	-	-
	Conductivity	µS/cm	Special Frequency 2	1	04/01/2024	16/01/2024	874	874	874	874
	Nitrate	mg/L	Special Frequency 2	1	04/01/2024	16/01/2024	0.01	0.01	0.01	0.01
	Nitrogen (Total)	mg/L	Special Frequency 2	1	04/01/2024	16/01/2024	0.2	0.2	0.2	0.2
	Oil and Grease	mg/L	Special Frequency 2	1	04/01/2024	16/01/2024	<5	<5	<5	<5
	pH	pH	Special Frequency 2	1	04/01/2024	16/01/2024	8.14	8.14	8.14	8.14
	Phosphorus (Total)	mg/L	Special Frequency 2	1	04/01/2024	16/01/2024	0.11	0.11	0.11	0.11
	Reactive Phosphorus	mg/L	Special Frequency 2	1	04/01/2024	16/01/2024	0.11	0.11	0.11	0.11

**WERRIS CREEK COAL EPL – MONTHLY SUMMARY**

EPL ID	Pollutant	Units of Measure	Monitoring Frequency	No. of Measurements for the Month	Date Sampled	Date Obtained	Min Value	Mean Value	Median Value	Max Value
	Total Suspended Solids	mg/L	Special Frequency 2	1	04/01/2024	16/01/2024	6	6	6	6
33	Aluminium (dissolved)	mg/L	Special Frequency 3	0*	-	-	-	-	-	-
	Arsenic (dissolved)	mg/L	Special Frequency 3	0*	-	-	-	-	-	-
	Barium (dissolved)	mg/L	Special Frequency 3	0*	-	-	-	-	-	-
	Beryllium (dissolved)	mg/L	Special Frequency 3	0*	-	-	-	-	-	-
	BOD	mg/L	Special Frequency 3	0*	-	-	-	-	-	-
	Cadmium (dissolved)	mg/L	Special Frequency 3	0*	-	-	-	-	-	-
	Chromium (dissolved)	mg/L	Special Frequency 3	0*	-	-	-	-	-	-
	Cobalt (dissolved)	mg/L	Special Frequency 3	0*	-	-	-	-	-	-
	Copper (dissolved)	mg/L	Special Frequency 3	0*	-	-	-	-	-	-
	Iron (dissolved)	mg/L	Special Frequency 3	0*	-	-	-	-	-	-
	Lead (dissolved)	mg/L	Special Frequency 3	0*	-	-	-	-	-	-
	Magnesium	mg/L	Special Frequency 3	0*	-	-	-	-	-	-
	Manganese (dissolved)	mg/L	Special Frequency 3	0*	-	-	-	-	-	-
	Nickel (dissolved)	mg/L	Special Frequency 3	0*	-	-	-	-	-	-
	Potassium	mg/L	Special Frequency 3	0*	-	-	-	-	-	-
	Selenium (dissolved)	mg/L	Special Frequency 3	0*	-	-	-	-	-	-
	Sodium	mg/L	Special Frequency 3	0*	-	-	-	-	-	-
	Total dissolved solids	mg/L	Special Frequency 3	0*	-	-	-	-	-	-
	Vanadium (dissolved)	mg/L	Special Frequency 3	0*	-	-	-	-	-	-
	Zinc (dissolved)	mg/L	Special Frequency 3	0*	-	-	-	-	-	-
34	Aluminium (dissolved)	mg/L	Special Frequency 3	0*	-	-	-	-	-	-
	Arsenic (dissolved)	mg/L	Special Frequency 3	0*	-	-	-	-	-	-

**WERRIS CREEK COAL EPL – MONTHLY SUMMARY**

EPL ID	Pollutant	Units of Measure	Monitoring Frequency	No. of Measurements for the Month	Date Sampled	Date Obtained	Min Value	Mean Value	Median Value	Max Value
	Barium (dissolved)	mg/L	Special Frequency 3	0*	-	-	-	-	-	-
	Beryllium (dissolved)	mg/L	Special Frequency 3	0*	-	-	-	-	-	-
	BOD	mg/L	Special Frequency 3	0*	-	-	-	-	-	-
	Cadmium (dissolved)	mg/L	Special Frequency 3	0*	-	-	-	-	-	-
	Chromium (dissolved)	mg/L	Special Frequency 3	0*	-	-	-	-	-	-
	Cobalt (dissolved)	mg/L	Special Frequency 3	0*	-	-	-	-	-	-
	Copper (dissolved)	mg/L	Special Frequency 3	0*	-	-	-	-	-	-
	Iron (dissolved)	mg/L	Special Frequency 3	0*	-	-	-	-	-	-
	Lead (dissolved)	mg/L	Special Frequency 3	0*	-	-	-	-	-	-
	Magnesium	mg/L	Special Frequency 3	0*	-	-	-	-	-	-
	Manganese (dissolved)	mg/L	Special Frequency 3	0*	-	-	-	-	-	-
	Nickel (dissolved)	mg/L	Special Frequency 3	0*	-	-	-	-	-	-
	Potassium	mg/L	Special Frequency 3	0*	-	-	-	-	-	-
	Selenium (dissolved)	mg/L	Special Frequency 3	0*	-	-	-	-	-	-
	Sodium	mg/L	Special Frequency 3	0*	-	-	-	-	-	-
	Total dissolved solids	mg/L	Special Frequency 3	0*	-	-	-	-	-	-
	Vanadium (dissolved)	mg/L	Special Frequency 3	0*	-	-	-	-	-	-
	Zinc (dissolved)	mg/L	Special Frequency 3	0*	-	-	-	-	-	-
35	Aluminium (dissolved)	mg/L	Special Frequency 3	0*	-	-	-	-	-	-
	Arsenic (dissolved)	mg/L	Special Frequency 3	0*	-	-	-	-	-	-
	Barium (dissolved)	mg/L	Special Frequency 3	0*	-	-	-	-	-	-
	Beryllium (dissolved)	mg/L	Special Frequency 3	0*	-	-	-	-	-	-
	BOD	mg/L	Special Frequency 3	0*	-	-	-	-	-	-
	Cadmium (dissolved)	mg/L	Special Frequency 3	0*	-	-	-	-	-	-
	Chromium (dissolved)	mg/L	Special Frequency 3	0*	-	-	-	-	-	-

**WERRIS CREEK COAL EPL – MONTHLY SUMMARY**

EPL ID	Pollutant	Units of Measure	Monitoring Frequency	No. of Measurements for the Month	Date Sampled	Date Obtained	Min Value	Mean Value	Median Value	Max Value
	Cobalt (dissolved)	mg/L	Special Frequency 3	0*	-	-	-	-	-	-
	Copper (dissolved)	mg/L	Special Frequency 3	0*	-	-	-	-	-	-
	Iron (dissolved)	mg/L	Special Frequency 3	0*	-	-	-	-	-	-
	Lead (dissolved)	mg/L	Special Frequency 3	0*	-	-	-	-	-	-
	Magnesium	mg/L	Special Frequency 3	0*	-	-	-	-	-	-
	Manganese (dissolved)	mg/L	Special Frequency 3	0*	-	-	-	-	-	-
	Nickel (dissolved)	mg/L	Special Frequency 3	0*	-	-	-	-	-	-
	Potassium	mg/L	Special Frequency 3	0*	-	-	-	-	-	-
	Selenium (dissolved)	mg/L	Special Frequency 3	0*	-	-	-	-	-	-
	Sodium	mg/L	Special Frequency 3	0*	-	-	-	-	-	-
	Total dissolved solids	mg/L	Special Frequency 3	0*	-	-	-	-	-	-
	Vanadium (dissolved)	mg/L	Special Frequency 3	0*	-	-	-	-	-	-
	Zinc (dissolved)	mg/L	Special Frequency 3	0*	-	-	-	-	-	-

<sup>1</sup>NS – No sample.

**Table 2 - Pollutant Limits Apply**

EPL ID	Pollutant	Units of Measure	Monitoring Frequency	No. of samples for the Month	Date Sampled	Date Obtained	Min Value	Max Value	100%ile Limit	Exceedance (Yes/No)	Comments
10	Total Suspended Solids	mg/L	Special Frequency 1	0*	-	-	-	-	50~	No	
	Oil and Grease	mg/L	Special Frequency 1	0*	-	-	-	-	10	No	
	pH	pH	Special Frequency 1	0*	-	-	-	-	6.5-8.5	No	

**WERRIS CREEK COAL EPL – MONTHLY SUMMARY**

EPL ID	Pollutant	Units of Measure	Monitoring Frequency	No. of samples for the Month	Date Sampled	Date Obtained	Min Value	Max Value	100%ile Limit	Exceedance (Yes/No)	Comments
12	Total Suspended Solids	mg/L	Special Frequency 1	1	04/01/2024	16/01/2024	6	6	50~	No	
	Oil and Grease	mg/L	Special Frequency 1	1	04/01/2024	16/01/2024	<5	<5	10	No	
	pH	pH	Special Frequency 1	1	04/01/2024	16/01/2024	6.93	6.93	6.5-8.5	No	
12	Total Suspended Solids	mg/L	Special Frequency 1	1	22/01/2024	26/02/2024	<5	<5	50~	No	
	Oil and Grease	mg/L	Special Frequency 1	1	22/01/2024	26/02/2024	<5	<5	10	No	
	pH	pH	Special Frequency 1	1	22/01/2024	26/02/2024	7.31	7.31	6.5-8.5	No	
14	Total Suspended Solids	mg/L	Special Frequency 1	0*	-	-	-	-	50~	No	
	Oil and Grease	mg/L	Special Frequency 1	0*	-	-	-	-	10	No	
	pH	pH	Special Frequency 1	0*	-	-	-	-	6.5-8.5	No	
32	Total Suspended Solids	mg/L	Special Frequency 1	0*	-	-	-	-	2000	No	
	Oil and Grease	mg/L	Special Frequency 1	0*	-	-	-	-	10	No	
	pH	pH	Special Frequency 1	0*	-	-	-	-	9	No	
33	Electrical Conductivity	µS/cm	Special Frequency 4	0*	-	-	-	-	2000	No	
	Oil and Grease	mg/L	Special Frequency 3	0*	-	-	-	-	10	No	
	pH	pH	Special Frequency 4	0*	-	-	-	-	9	No	
34	Electrical Conductivity	µS/cm	Special Frequency 4	0*	-	-	-	-	2000	No	
	Oil and Grease	mg/L	Special Frequency 3	0*	-	-	-	-	10	No	
	pH	pH	Special Frequency 4	0*	-	-	-	-	9	No	
35	Electrical Conductivity	µS/cm	Special Frequency 4	1	15/01/2024	1/1/2024	1688	1688	2000	No	
	Oil and Grease	mg/L	Special Frequency 3	1	21/11/2023	30/11/2023	<5	<5	10	No	

**WERRIS CREEK COAL EPL – MONTHLY SUMMARY**

EPL ID	Pollutant	Units of Measure	Monitoring Frequency	No. of samples for the Month	Date Sampled	Date Obtained	Min Value	Max Value	100%ile Limit	Exceedance (Yes/No)	Comments
	pH	pH	Special Frequency 4	1	15/01/2024	1/1/2024	7.52	7.52	9	No	

~ Total Suspended Solids permitted to exceed 50mg/L if 5 day rainfall is greater than 39.2mm prior to discharge

\*No Special Frequency Events occurred during Sampling Period, therefore no data has been collected.

#The discharge sample was inconsistent with pre-discharge sampling of the dam and has been discussed with the EPA. This will be documented in the Annual Return.

- For the purposes of this condition, Special Frequency 1 means as soon as practicable after overflow commences and in any case not more than 12 hours after any overflow commencing.
- For the purposes of this condition, Special Frequency 2 means within 12 hours after any overflow from a storage dam(s) on the premises occurring.
- For the purposes of this condition, Special Frequency 3 means every three months. If no mine void water is planned to be provided for agricultural purposes within the three months following scheduled sampling, then sampling is not required.
- For the purposes of this condition, Special Frequency 4 means prior to, but not more than 24 hours prior to providing mine void water for agricultural purposes and then weekly thereafter, until the provision of water ceases. Samples are only required to be taken from the void water dam that is supplying water for agricultural purposes.



**WERRIS CREEK COAL EPL – MONTHLY SUMMARY**

**Table 3 – Monitoring (Quarterly & 6 monthly – no limits apply)**

EPL ID	Pollutant	Units of Measure	Monitoring Frequency	No. of Measurements for the Period	Date Sampled	Date Obtained	Min Value	Mean Value	Median Value	Max Value
16	Conductivity	µS/cm	Every 3 Months	0*	-	-	-	-	-	-
	Nitrate	mg/L	Every 3 Months	0*	-	-	-	-	-	-
	Nitrogen (Total)	mg/L	Every 3 Months	0*	-	-	-	-	-	-
	Oil and Grease	mg/L	Every 3 Months	0*	-	-	-	-	-	-
	pH	pH	Every 3 Months	0*	-	-	-	-	-	-
	Phosphorus (Total)	mg/L	Every 3 Months	0*	-	-	-	-	-	-
	Reactive Phosphorus	mg/L	Every 3 Months	0*	-	-	-	-	-	-
27	Total Suspended Solids	mg/L	Every 3 Months	0*	-	-	-	-	-	-
	Conductivity	µS/cm	Every 3 Months	0*	-	-	-	-	-	-
	Nitrate	mg/L	Every 3 Months	0*	-	-	-	-	-	-
	Nitrogen (Total)	mg/L	Every 3 Months	0*	-	-	-	-	-	-
	Oil and Grease	mg/L	Every 3 Months	0*	-	-	-	-	-	-
	pH	pH	Every 3 Months	0*	-	-	-	-	-	-
	Phosphorus (Total)	mg/L	Every 3 Months	0*	-	-	-	-	-	-
17	Reactive Phosphorus	mg/L	Every 3 Months	0*	-	-	-	-	-	-
	Total Suspended Solids	mg/L	Every 3 Months	0*	-	-	-	-	-	-
	Conductivity	µS/cm	Every 6 Months	0*	-	-	-	-	-	-
	Nitrate	mg/L	Every 6 Months	0*	-	-	-	-	-	-
17	Nitrogen (Total)	mg/L	Every 6 Months	0*	-	-	-	-	-	-
	pH	pH	Every 6 Months	0*	-	-	-	-	-	-

**WERRIS CREEK COAL EPL – MONTHLY SUMMARY**

EPL ID	Pollutant	Units of Measure	Monitoring Frequency	No. of Measurements for the Period	Date Sampled	Date Obtained	Min Value	Mean Value	Median Value	Max Value
	Phosphorus (Total)	mg/L	Every 6 Months	0*	-	-	-	-	-	-
	Reactive Phosphorus	mg/L	Every 6 Months	0*	-	-	-	-	-	-
	Standing Water Level	Metres	Every 6 Months	0*	-	-	-	-	-	-
18	Conductivity	µS/cm	Every 6 Months	0*	-	-	-	-	-	-
	Nitrate	mg/L	Every 6 Months	0*	-	-	-	-	-	-
	Nitrogen (Total)	mg/L	Every 6 Months	0*	-	-	-	-	-	-
	pH	pH	Every 6 Months	0*	-	-	-	-	-	-
	Phosphorus (Total)	mg/L	Every 6 Months	0*	-	-	-	-	-	-
	Reactive Phosphorus	mg/L	Every 6 Months	0*	-	-	-	-	-	-
	Standing Water Level	Metres	Every 6 Months	0*	-	-	-	-	-	-
19	Conductivity	µS/cm	Every 6 Months	0*	-	-	-	-	-	-
	Nitrate	mg/L	Every 6 Months	0*	-	-	-	-	-	-
	Nitrogen (Total)	mg/L	Every 6 Months	0*	-	-	-	-	-	-
	pH	pH	Every 6 Months	0*	-	-	-	-	-	-
	Phosphorus (Total)	mg/L	Every 6 Months	0*	-	-	-	-	-	-
	Reactive Phosphorus	mg/L	Every 6 Months	0*	-	-	-	-	-	-
	Standing Water Level	Metres	Every 6 Months	0*	-	-	-	-	-	-
20	Conductivity	µS/cm	Every 6 Months	0*	-	-	-	-	-	-
	Nitrate	mg/L	Every 6 Months	0*	-	-	-	-	-	-
	Nitrogen (Total)	mg/L	Every 6 Months	0*	-	-	-	-	-	-
	pH	pH	Every 6 Months	0*	-	-	-	-	-	-

**WERRIS CREEK COAL EPL – MONTHLY SUMMARY**

EPL ID	Pollutant	Units of Measure	Monitoring Frequency	No. of Measurements for the Period	Date Sampled	Date Obtained	Min Value	Mean Value	Median Value	Max Value
	Phosphorus (Total)	mg/L	Every 6 Months	0*	-	-	-	-	-	-
	Reactive Phosphorus	mg/L	Every 6 Months	0*	-	-	-	-	-	-
	Standing Water Level	Metres	Every 6 Months	0*	-	-	-	-	-	-
21	Conductivity	µS/cm	Every 6 Months	0*	-	-	-	-	-	-
	Nitrate	mg/L	Every 6 Months	0*	-	-	-	-	-	-
	Nitrogen (Total)	mg/L	Every 6 Months	0*	-	-	-	-	-	-
	pH	pH	Every 6 Months	0*	-	-	-	-	-	-
	Phosphorus (Total)	mg/L	Every 6 Months	0*	-	-	-	-	-	-
	Reactive Phosphorus	mg/L	Every 6 Months	0*	-	-	-	-	-	-
	Standing Water Level	Metres	Every 6 Months	0*	-	-	-	-	-	-
22	Conductivity	µS/cm	Every 6 Months	0*	-	-	-	-	-	-
	Nitrate	mg/L	Every 6 Months	0*	-	-	-	-	-	-
	Nitrogen (Total)	mg/L	Every 6 Months	0*	-	-	-	-	-	-
	pH	pH	Every 6 Months	0*	-	-	-	-	-	-
	Phosphorus (Total)	mg/L	Every 6 Months	0*	-	-	-	-	-	-
	Reactive Phosphorus	mg/L	Every 6 Months	0*	-	-	-	-	-	-
	Standing Water Level	Metres	Every 6 Months	0*	-	-	-	-	-	-

TLTS – too low to sample

\*This reporting period does not include measurements for the 6 monthly or 3 monthly monitoring as they did not occur in this period. These will be reported in their relevant periods.

## WERRIS CREEK COAL EPL – MONTHLY SUMMARY

**Table 4 – Monitoring (Noise – Limits Apply)**

Location	Date	Measurement Period	Start Time	Measured levels – dB(A)		Limit(s)	Weather (Inversion °C/100m & / Wind m/s / Wind Direction °)	Observations	(Potential) Non-compliance /breach	Date Obtained
				LA1, 1 Minute	LAeq, 15 Minute					
R24	15 January 2024	60 minutes	10:14am	N/A	44	Day 37	2.6 / 189	Insects (43), traffic (35), birds (32), aeroplanes (27), <b>WCC (&lt;20)</b>	No	26/02/2024
R12	15 January 2024	60 minutes	5:27pm	N/A	47	Day 38	7.6 / 154	Birds (47), traffic (35), wind in trees (29), <b>WCC (&lt;20)</b>	No	26/02/2024
R96	15 January 2024	60 minutes	4:20pm	N/A	50	Day 38	7.9 / 170	Birds (50), wind in trees (30), <b>WCC (&lt;20)</b>	No	26/02/2024
R98	15 January 2024	60 minutes	3:10pm	N/A	59	Day 35	7.7 / 161	Birds (59), wind in trees (33), <b>WCC (&lt;20)</b>	No	26/02/2024
R57	15 January 2024	60 minutes	12:12pm	N/A	49	Day 35	2.6 / 225	Traffic (49), insects (36), Crawfords <sup>1</sup> (33), birds (31), <b>WCC (&lt;20)</b>	No	26/02/2024
R24	15 January 2024	60 minutes	7:56pm	<20	45	Night 37	Lapse / 2.0 / 159	Traffic (44), insects (37), frogs (27), <b>WCC (&lt;20)</b>	No	26/02/2024
R12	15 January 2024	60 minutes	11:47pm	<20	35	Night 38	Lapse / 2.9 / 157	Insects (34), frogs (26), traffic (26), <b>WCC (&lt;20)</b>	No	26/02/2024
R96	15 January 2024	60 minutes	10:38pm	<20	48	Night 37	Lapse / 3.0 / 154	Traffic (48), insects (33), frogs (30), <b>WCC (&lt;20)</b>	No	26/02/2024
R98	15 January 2024	60 minutes	9:31pm	<20	37	Night 35	Lapse / 2.5 / 159	Traffic (35), insects (32), <b>WCC (&lt;20)</b>	No	26/02/2024
R57	15 January 2024	60 minutes	7:43pm	<20	50	Night 35	Lapse / 5.3 / 127	Traffic (49), train (41), birds (33), insects (29), <b>WCC (&lt;20)</b>	No	26/02/2024

**NM = Not Measurable. This denotes noise from the mine was audible at low levels however cannot be quantified.**

**IA = Inaudible.**

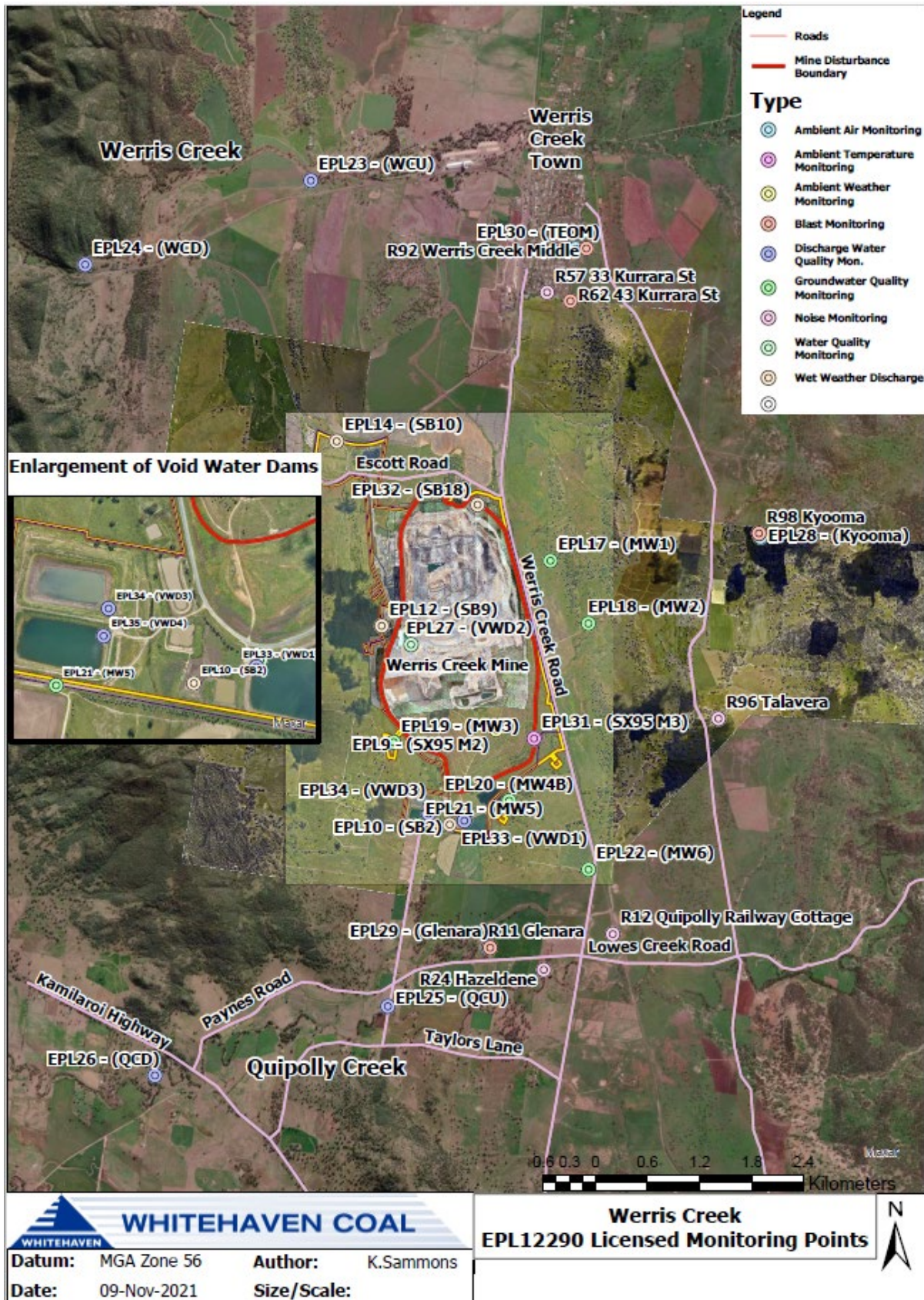
<sup>1</sup> Crawfords Freightlines Werris Creek

**WERRIS CREEK COAL EPL – MONTHLY SUMMARY**
**Table 5 – Monitoring (Blasts – Limits Apply)**

Location	Parameter	Units of Measure	Frequency	No. of Blasts for the Month	Average Value	Max Value	100%ile Limit	(Potential) Non-compliance /breach	Date Obtained
R11	Blast Noise	dB (Lin Peak)	Every Blast	1	95.8	95.8	120.0	No	01/02/2024
	Blast Vibration	mm/s	Every Blast	1	0.13	0.13	10.0	No	01/02/2024
R98	Blast Noise	dB (Lin Peak)	Every Blast	1	92.1	92.1	120.0	No	01/02/2024
	Blast Vibration	mm/s	Every Blast	1	0.87	0.87	10.0	No	01/02/2024
R62	Blast Noise	dB (Lin Peak)	Every Blast	1	97.5	97.5	120.0	No	01/02/2024
	Blast Vibration	mm/s	Every Blast	1	0.42	0.42	10.0	No	01/02/2024
R92	Blast Noise	dB (Lin Peak)	Every Blast	1	65.3	65.3	120.0	No	01/02/2024
	Blast Vibration	mm/s	Every Blast	1	0.17	0.17	10.0	No	01/02/2024



## WERRIS CREEK COAL EPL – MONTHLY SUMMARY



## WERRIS CREEK COAL EPL – MONTHLY SUMMARY

### Site Information

**EPL No.:** 12290

**EPA Website Link:** <http://www.epa.nsw.gov.au/prpoeoapp/ViewPOEOLicence.aspx?DOCID=31280&SYSUID=1&LICID=12290>

**Licensee:** Werris Creek Coal Pty Limited

**Premises:** Werris Creek Coal, 1435 Werris Creek Road, WERRIS CREEK NSW 2341

**EPL Monitoring Points:** See figure at end of document

**Sampling Period:** FEBRUARY 2024

**Obtained Date:** 20<sup>th</sup> March 2024

**Publication Date:** 21<sup>st</sup> March 2024

**Table 1 - No Pollutant Limits Apply**

EPL ID	Pollutant	Units of Measure	Monitoring Frequency	No. of Measurements for the Month	Date Sampled	Date Obtained	Min Value	Mean Value	Median Value	Max Value
28	PM10	µg/m <sup>3</sup>	Every 6 days	6	29/02/2024	14/03/2024	2.3	7.4	5.4	12.8
	Solid Particles	g/m <sup>2</sup> /month	Continuous	1	19/02/2024	01/03/2024	0.6	0.6	0.6	0.6
29	PM10	µg/m <sup>3</sup>	Every 6 days	6	29/02/2023	14/03/2024	4.2	12.8	14.7	22.9
	Solid Particles	g/m <sup>2</sup> /month	Continuous	1	19/02/2024	01/03/2024	2.2	2.2	2.2	2.2
30	PM10	µg/m <sup>3</sup>	Continuous	Continuous	29/02/2024	07/03/2024	6.6	15.2	14.1	24.3
	Solid Particles	g/m <sup>2</sup> /month	Continuous	1	19/02/2024	01/03/2024	0.4	0.4	0.4	0.4
10	Conductivity	µS/cm	Special Frequency 1	0*	-	-	-	-	-	-
	Nitrate	mg/L	Special Frequency 1	0*	-	-	-	-	-	-
	Nitrogen (Total)	mg/L	Special Frequency 1	0*	-	-	-	-	-	-
	Phosphorus (Total)	mg/L	Special Frequency 1	0*	-	-	-	-	-	-
	Reactive Phosphorus	mg/L	Special Frequency 1	0*	-	-	-	-	-	-
12	Conductivity	µS/cm	Special Frequency 1	0*	-	-	-	-	-	-
	Nitrate	mg/L	Special Frequency 1	0*	-	-	-	-	-	-
	Nitrogen (Total)	mg/L	Special Frequency 1	0*	-	-	-	-	-	-
	Phosphorus (Total)	mg/L	Special Frequency 1	0*	-	-	-	-	-	-

**WERRIS CREEK COAL EPL – MONTHLY SUMMARY**

EPL ID	Pollutant	Units of Measure	Monitoring Frequency	No. of Measurements for the Month	Date Sampled	Date Obtained	Min Value	Mean Value	Median Value	Max Value
	Reactive Phosphorus	mg/L	Special Frequency 1	0*	-	-	-	-	-	-
14	Conductivity	µS/cm	Special Frequency 1	0*	-	-	-	-	-	-
	Nitrate	mg/L	Special Frequency 1	0*	-	-	-	-	-	-
	Nitrogen (Total)	mg/L	Special Frequency 1	0*	-	-	-	-	-	-
	Phosphorus (Total)	mg/L	Special Frequency 1	0*	-	-	-	-	-	-
	Reactive Phosphorus	mg/L	Special Frequency 1	0*	-	-	-	-	-	-
32	Conductivity	µS/cm	Special Frequency 1	0*	-	-	-	-	-	-
	Nitrate	mg/L	Special Frequency 1	0*	-	-	-	-	-	-
	Nitrogen (Total)	mg/L	Special Frequency 1	0*	-	-	-	-	-	-
	Oil and Grease	mg/L	Special Frequency 1	0*	-	-	-	-	-	-
	pH	pH	Special Frequency 1	0*	-	-	-	-	-	-
	Phosphorus (Total)	mg/L	Special Frequency 1	0*	-	-	-	-	-	-
	Reactive Phosphorus	mg/L	Special Frequency 1	0*	-	-	-	-	-	-
	Total Suspended Solids	mg/L	Special Frequency 1	0*	-	-	-	-	-	-
23	Conductivity	µS/cm	Special Frequency 2	0*	-	-	-	-	-	-
	Nitrate	mg/L	Special Frequency 2	0*	-	-	-	-	-	-
	Nitrogen (Total)	mg/L	Special Frequency 2	0*	-	-	-	-	-	-
	Oil and Grease	mg/L	Special Frequency 2	0*	-	-	-	-	-	-
	pH	pH	Special Frequency 2	0*	-	-	-	-	-	-
	Phosphorus (Total)	mg/L	Special Frequency 2	0*	-	-	-	-	-	-
	Reactive Phosphorus	mg/L	Special Frequency 2	0*	-	-	-	-	-	-
	Total Suspended Solids	mg/L	Special Frequency 2	0*	-	-	-	-	-	-
24	Conductivity	µS/cm	Special Frequency 2	0*	-	-	-	-	-	-



**WERRIS CREEK COAL EPL – MONTHLY SUMMARY**

EPL ID	Pollutant	Units of Measure	Monitoring Frequency	No. of Measurements for the Month	Date Sampled	Date Obtained	Min Value	Mean Value	Median Value	Max Value
	Nitrate	mg/L	Special Frequency 2	0*	-	-	-	-	-	-
	Nitrogen (Total)	mg/L	Special Frequency 2	0*	-	-	-	-	-	-
	Oil and Grease	mg/L	Special Frequency 2	0*	-	-	-	-	-	-
	pH	pH	Special Frequency 2	0*	-	-	-	-	-	-
	Phosphorus (Total)	mg/L	Special Frequency 2	0*	-	-	-	-	-	-
	Reactive Phosphorus	mg/L	Special Frequency 2	0*	-	-	-	-	-	-
	Total Suspended Solids	mg/L	Special Frequency 2	0*	-	-	-	-	-	-
25	Conductivity	µS/cm	Special Frequency 2	0*	-	-	-	-	-	-
	Nitrate	mg/L	Special Frequency 2	0*	-	-	-	-	-	-
	Nitrogen (Total)	mg/L	Special Frequency 2	0*	-	-	-	-	-	-
	Oil and Grease	mg/L	Special Frequency 2	0*	-	-	-	-	-	-
	pH	pH	Special Frequency 2	0*	-	-	-	-	-	-
	Phosphorus (Total)	mg/L	Special Frequency 2	0*	-	-	-	-	-	-
	Reactive Phosphorus	mg/L	Special Frequency 2	0*	-	-	-	-	-	-
26	Conductivity	µS/cm	Special Frequency 2	0*	-	-	-	-	-	-
	Nitrate	mg/L	Special Frequency 2	0*	-	-	-	-	-	-
	Nitrogen (Total)	mg/L	Special Frequency 2	0*	-	-	-	-	-	-
	Oil and Grease	mg/L	Special Frequency 2	0*	-	-	-	-	-	-
	pH	pH	Special Frequency 2	0*	-	-	-	-	-	-
	Phosphorus (Total)	mg/L	Special Frequency 2	0*	-	-	-	-	-	-
	Reactive Phosphorus	mg/L	Special Frequency 2	0*	-	-	-	-	-	-
	Total Suspended Solids	mg/L	Special Frequency 2	0*	-	-	-	-	-	-

**WERRIS CREEK COAL EPL – MONTHLY SUMMARY**

EPL ID	Pollutant	Units of Measure	Monitoring Frequency	No. of Measurements for the Month	Date Sampled	Date Obtained	Min Value	Mean Value	Median Value	Max Value
33	Aluminium (dissolved)	mg/L	Special Frequency 3	0*	-	-	-	-	-	-
	Arsenic (dissolved)	mg/L	Special Frequency 3	0*	-	-	-	-	-	-
	Barium (dissolved)	mg/L	Special Frequency 3	0*	-	-	-	-	-	-
	Beryllium (dissolved)	mg/L	Special Frequency 3	0*	-	-	-	-	-	-
	BOD	mg/L	Special Frequency 3	0*	-	-	-	-	-	-
	Cadmium (dissolved)	mg/L	Special Frequency 3	0*	-	-	-	-	-	-
	Chromium (dissolved)	mg/L	Special Frequency 3	0*	-	-	-	-	-	-
	Cobalt (dissolved)	mg/L	Special Frequency 3	0*	-	-	-	-	-	-
	Copper (dissolved)	mg/L	Special Frequency 3	0*	-	-	-	-	-	-
	Iron (dissolved)	mg/L	Special Frequency 3	0*	-	-	-	-	-	-
	Lead (dissolved)	mg/L	Special Frequency 3	0*	-	-	-	-	-	-
	Magnesium	mg/L	Special Frequency 3	0*	-	-	-	-	-	-
	Manganese (dissolved)	mg/L	Special Frequency 3	0*	-	-	-	-	-	-
	Nickel (dissolved)	mg/L	Special Frequency 3	0*	-	-	-	-	-	-
	Potassium	mg/L	Special Frequency 3	0*	-	-	-	-	-	-
	Selenium (dissolved)	mg/L	Special Frequency 3	0*	-	-	-	-	-	-
	Sodium	mg/L	Special Frequency 3	0*	-	-	-	-	-	-
	Total dissolved solids	mg/L	Special Frequency 3	0*	-	-	-	-	-	-
	Vanadium (dissolved)	mg/L	Special Frequency 3	0*	-	-	-	-	-	-
	Zinc (dissolved)	mg/L	Special Frequency 3	0*	-	-	-	-	-	-
34	Aluminium (dissolved)	mg/L	Special Frequency 3	0*	-	-	-	-	-	-
	Arsenic (dissolved)	mg/L	Special Frequency 3	0*	-	-	-	-	-	-

**WERRIS CREEK COAL EPL – MONTHLY SUMMARY**

EPL ID	Pollutant	Units of Measure	Monitoring Frequency	No. of Measurements for the Month	Date Sampled	Date Obtained	Min Value	Mean Value	Median Value	Max Value
	Barium (dissolved)	mg/L	Special Frequency 3	0*	-	-	-	-	-	-
	Beryllium (dissolved)	mg/L	Special Frequency 3	0*	-	-	-	-	-	-
	BOD	mg/L	Special Frequency 3	0*	-	-	-	-	-	-
	Cadmium (dissolved)	mg/L	Special Frequency 3	0*	-	-	-	-	-	-
	Chromium (dissolved)	mg/L	Special Frequency 3	0*	-	-	-	-	-	-
	Cobalt (dissolved)	mg/L	Special Frequency 3	0*	-	-	-	-	-	-
	Copper (dissolved)	mg/L	Special Frequency 3	0*	-	-	-	-	-	-
	Iron (dissolved)	mg/L	Special Frequency 3	0*	-	-	-	-	-	-
	Lead (dissolved)	mg/L	Special Frequency 3	0*	-	-	-	-	-	-
	Magnesium	mg/L	Special Frequency 3	0*	-	-	-	-	-	-
	Manganese (dissolved)	mg/L	Special Frequency 3	0*	-	-	-	-	-	-
	Nickel (dissolved)	mg/L	Special Frequency 3	0*	-	-	-	-	-	-
	Potassium	mg/L	Special Frequency 3	0*	-	-	-	-	-	-
	Selenium (dissolved)	mg/L	Special Frequency 3	0*	-	-	-	-	-	-
	Sodium	mg/L	Special Frequency 3	0*	-	-	-	-	-	-
	Total dissolved solids	mg/L	Special Frequency 3	0*	-	-	-	-	-	-
	Vanadium (dissolved)	mg/L	Special Frequency 3	0*	-	-	-	-	-	-
	Zinc (dissolved)	mg/L	Special Frequency 3	0*	-	-	-	-	-	-
35	Aluminium (dissolved)	mg/L	Special Frequency 3	1	27/02/2024	21/03/2024	<0.01	<0.01	<0.01	<0.01
	Arsenic (dissolved)	mg/L	Special Frequency 3	1	27/02/2024	21/03/2024	0.002	0.002	0.002	0.002
	Barium (dissolved)	mg/L	Special Frequency 3	1	27/02/2024	21/03/2024	0.076	0.076	0.076	0.076
	Beryllium (dissolved)	mg/L	Special Frequency 3	1	27/02/2024	21/03/2024	<0.001	<0.001	<0.001	<0.001
	BOD	mg/L	Special Frequency 3	1	27/02/2024	21/03/2024	3.00	3.00	3.00	3.00

**WERRIS CREEK COAL EPL – MONTHLY SUMMARY**

EPL ID	Pollutant	Units of Measure	Monitoring Frequency	No. of Measurements for the Month	Date Sampled	Date Obtained	Min Value	Mean Value	Median Value	Max Value
	Cadmium (dissolved)	mg/L	Special Frequency 3	1	27/02/2024	21/03/2024	<0.0001	<0.0001	<0.0001	<0.0001
	Chromium (dissolved)	mg/L	Special Frequency 3	1	27/02/2024	21/03/2024	<0.001	<0.001	<0.001	<0.001
	Cobalt (dissolved)	mg/L	Special Frequency 3	1	27/02/2024	21/03/2024	<0.001	<0.001	<0.001	<0.001
	Copper (dissolved)	mg/L	Special Frequency 3	1	27/02/2024	21/03/2024	<0.001	<0.001	<0.001	<0.001
	Iron (dissolved)	mg/L	Special Frequency 3	1	27/02/2024	21/03/2024	<0.05	<0.05	<0.05	<0.05
	Lead (dissolved)	mg/L	Special Frequency 3	1	27/02/2024	21/03/2024	<0.001	<0.001	<0.001	<0.001
	Magnesium	mg/L	Special Frequency 3	1	27/02/2024	21/03/2024	45	45	45	45
	Manganese (dissolved)	mg/L	Special Frequency 3	1	27/02/2024	21/03/2024	0.002	0.002	0.002	0.002
	Nickel (dissolved)	mg/L	Special Frequency 3	1	27/02/2024	21/03/2024	0.001	0.001	0.001	0.001
	Potassium	mg/L	Special Frequency 3	1	27/02/2024	21/03/2024	18	18	18	18
	Selenium (dissolved)	mg/L	Special Frequency 3	1	27/02/2024	21/03/2024	<0.01	<0.01	<0.01	<0.01
	Sodium	mg/L	Special Frequency 3	1	27/02/2024	21/03/2024	205	205	205	205
	Total dissolved solids	mg/L	Special Frequency 3	1	27/02/2024	21/03/2024	1400	1400	1400	1400
	Vanadium (dissolved)	mg/L	Special Frequency 3	1	27/02/2024	21/03/2024	<0.01	<0.01	<0.01	<0.01
	Zinc (dissolved)	mg/L	Special Frequency 3	1	27/02/2024	21/03/2024	0.005	0.005	0.005	0.005

<sup>1</sup>NS – No sample.

**WERRIS CREEK COAL EPL – MONTHLY SUMMARY**
**Table 2 - Pollutant Limits Apply**

EPL ID	Pollutant	Units of Measure	Monitoring Frequency	No. of samples for the Month	Date Sampled	Date Obtained	Min Value	Max Value	100%ile Limit	Exceedance (Yes/No)	Comments
10	Total Suspended Solids	mg/L	Special Frequency 1	0*	-	-	-	-	50~	No	
	Oil and Grease	mg/L	Special Frequency 1	0*	-	-	-	-	10	No	
	pH	pH	Special Frequency 1	0*	-	-	-	-	6.5-8.5	No	
12	Total Suspended Solids	mg/L	Special Frequency 1	0*	-	-	-	-	50~	No	
	Oil and Grease	mg/L	Special Frequency 1	0*	-	-	-	-	10	No	
	pH	pH	Special Frequency 1	0*	-	-	-	-	6.5-8.5	No	
14	Total Suspended Solids	mg/L	Special Frequency 1	0*	-	-	-	-	50~	No	
	Oil and Grease	mg/L	Special Frequency 1	0*	-	-	-	-	10	No	
	pH	pH	Special Frequency 1	0*	-	-	-	-	6.5-8.5	No	
32	Total Suspended Solids	mg/L	Special Frequency 1	0*	-	-	-	-	2000	No	
	Oil and Grease	mg/L	Special Frequency 1	0*	-	-	-	-	10	No	
	pH	pH	Special Frequency 1	0*	-	-	-	-	9	No	
33	Electrical Conductivity	µS/cm	Special Frequency 4	0*	-	-	-	-	2000	No	
	Oil and Grease	mg/L	Special Frequency 3	0*	-	-	-	-	10	No	
	pH	pH	Special Frequency 4	0*	-	-	-	-	9	No	
34	Electrical Conductivity	µS/cm	Special Frequency 4	0*	-	-	-	-	2000	No	
	Oil and Grease	mg/L	Special Frequency 3	0*	-	-	-	-	10	No	
	pH	pH	Special Frequency 4	0*	-	-	-	-	9	No	

**WERRIS CREEK COAL EPL – MONTHLY SUMMARY**

EPL ID	Pollutant	Units of Measure	Monitoring Frequency	No. of samples for the Month	Date Sampled	Date Obtained	Min Value	Max Value	100%ile Limit	Exceedance (Yes/No)	Comments
35	Electrical Conductivity	µS/cm	Special Frequency 4	2	5/2 & 15/2/2024	29/02/2024	1595	1825	2000	No	
	Oil and Grease	mg/L	Special Frequency 3	1	27/02/2024	21/03/2024	<5	<5	10	No	
	pH	pH	Special Frequency 4	2	5/2 & 15/2/2024	29/02/2024	7.8	8.2	9	No	

~ Total Suspended Solids permitted to exceed 50mg/L if 5 day rainfall is greater than 39.2mm prior to discharge

\*No Special Frequency Events occurred during Sampling Period, therefore no data has been collected.

#The discharge sample was inconsistent with pre-discharge sampling of the dam and has been discussed with the EPA. This will be documented in the Annual Return.

- For the purposes of this condition, Special Frequency 1 means as soon as practicable after overflow commences and in any case not more than 12 hours after any overflow commencing.
- For the purposes of this condition, Special Frequency 2 means within 12 hours after any overflow from a storage dam(s) on the premises occurring.
- For the purposes of this condition, Special Frequency 3 means every three months. If no mine void water is planned to be provided for agricultural purposes within the three months following scheduled sampling, then sampling is not required.
- For the purposes of this condition, Special Frequency 4 means prior to, but not more than 24 hours prior to providing mine void water for agricultural purposes and then weekly thereafter, until the provision of water ceases. Samples are only required to be taken from the void water dam that is supplying water for agricultural purposes.

**WERRIS CREEK COAL EPL – MONTHLY SUMMARY**
**Table 3 – Monitoring (Quarterly & 6 monthly – no limits apply)**

EPL ID	Pollutant	Units of Measure	Monitoring Frequency	No. of Measurements for the Period	Date Sampled	Date Obtained	Min Value	Mean Value	Median Value	Max Value
16	Conductivity	µS/cm	Every 3 Months	1	27/02/2024	19/03/2024	1930	1930	1930	1930
	Nitrate	mg/L	Every 3 Months	1	27/02/2024	19/03/2024	<0.01	<0.01	<0.01	<0.01
	Nitrogen (Total)	mg/L	Every 3 Months	1	27/02/2024	19/03/2024	0.2	0.2	0.2	0.2
	Oil and Grease	mg/L	Every 3 Months	1	27/02/2024	19/03/2024	<5	<5	<5	<5
	pH	pH	Every 3 Months	1	27/02/2024	19/03/2024	8.01	8.01	8.01	8.01
	Phosphorus (Total)	mg/L	Every 3 Months	1	27/02/2024	19/03/2024	0.02	0.02	0.02	0.02
	Reactive Phosphorus	mg/L	Every 3 Months	1	27/02/2024	19/03/2024	0.01	0.01	0.01	0.01
	Total Suspended Solids	mg/L	Every 3 Months	1	27/02/2024	19/03/2024	<5	<5	<5	<5
27	Conductivity	µS/cm	Every 3 Months	0*	-	-	-	-	-	-
	Nitrate	mg/L	Every 3 Months	0*	-	-	-	-	-	-
	Nitrogen (Total)	mg/L	Every 3 Months	0*	-	-	-	-	-	-
	Oil and Grease	mg/L	Every 3 Months	0*	-	-	-	-	-	-
	pH	pH	Every 3 Months	0*	-	-	-	-	-	-
	Phosphorus (Total)	mg/L	Every 3 Months	0*	-	-	-	-	-	-
	Reactive Phosphorus	mg/L	Every 3 Months	0*	-	-	-	-	-	-
	Total Suspended Solids	mg/L	Every 3 Months	0*	-	-	-	-	-	-
17	Conductivity	µS/cm	Every 6 Months	0*	-	-	-	-	-	-
	Nitrate	mg/L	Every 6 Months	0*	-	-	-	-	-	-
	Nitrogen (Total)	mg/L	Every 6 Months	0*	-	-	-	-	-	-

**WERRIS CREEK COAL EPL – MONTHLY SUMMARY**

EPL ID	Pollutant	Units of Measure	Monitoring Frequency	No. of Measurements for the Period	Date Sampled	Date Obtained	Min Value	Mean Value	Median Value	Max Value
	pH	pH	Every 6 Months	0*	-	-	-	-	-	-
	Phosphorus (Total)	mg/L	Every 6 Months	0*	-	-	-	-	-	-
	Reactive Phosphorus	mg/L	Every 6 Months	0*	-	-	-	-	-	-
	Standing Water Level	Metres	Every 6 Months	0*	-	-	-	-	-	-
18	Conductivity	µS/cm	Every 6 Months	0*	-	-	-	-	-	-
	Nitrate	mg/L	Every 6 Months	0*	-	-	-	-	-	-
	Nitrogen (Total)	mg/L	Every 6 Months	0*	-	-	-	-	-	-
	pH	pH	Every 6 Months	0*	-	-	-	-	-	-
	Phosphorus (Total)	mg/L	Every 6 Months	0*	-	-	-	-	-	-
	Reactive Phosphorus	mg/L	Every 6 Months	0*	-	-	-	-	-	-
19	Standing Water Level	Metres	Every 6 Months	0*	-	-	-	-	-	-
	Conductivity	µS/cm	Every 6 Months	0*	-	-	-	-	-	-
	Nitrate	mg/L	Every 6 Months	0*	-	-	-	-	-	-
	Nitrogen (Total)	mg/L	Every 6 Months	0*	-	-	-	-	-	-
	pH	pH	Every 6 Months	0*	-	-	-	-	-	-
	Phosphorus (Total)	mg/L	Every 6 Months	0*	-	-	-	-	-	-
	Reactive Phosphorus	mg/L	Every 6 Months	0*	-	-	-	-	-	-
20	Standing Water Level	Metres	Every 6 Months	0*	-	-	-	-	-	-
	Conductivity	µS/cm	Every 6 Months	0*	-	-	-	-	-	-
	Nitrate	mg/L	Every 6 Months	0*	-	-	-	-	-	-



**WERRIS CREEK COAL EPL – MONTHLY SUMMARY**

EPL ID	Pollutant	Units of Measure	Monitoring Frequency	No. of Measurements for the Period	Date Sampled	Date Obtained	Min Value	Mean Value	Median Value	Max Value
	Nitrogen (Total)	mg/L	Every 6 Months	0*	-	-	-	-	-	-
	pH	pH	Every 6 Months	0*	-	-	-	-	-	-
	Phosphorus (Total)	mg/L	Every 6 Months	0*	-	-	-	-	-	-
	Reactive Phosphorus	mg/L	Every 6 Months	0*	-	-	-	-	-	-
	Standing Water Level	Metres	Every 6 Months	0*	-	-	-	-	-	-
21	Conductivity	µS/cm	Every 6 Months	0*	-	-	-	-	-	-
	Nitrate	mg/L	Every 6 Months	0*	-	-	-	-	-	-
	Nitrogen (Total)	mg/L	Every 6 Months	0*	-	-	-	-	-	-
	pH	pH	Every 6 Months	0*	-	-	-	-	-	-
	Phosphorus (Total)	mg/L	Every 6 Months	0*	-	-	-	-	-	-
	Reactive Phosphorus	mg/L	Every 6 Months	0*	-	-	-	-	-	-
	Standing Water Level	Metres	Every 6 Months	0*	-	-	-	-	-	-
22	Conductivity	µS/cm	Every 6 Months	0*	-	-	-	-	-	-
	Nitrate	mg/L	Every 6 Months	0*	-	-	-	-	-	-
	Nitrogen (Total)	mg/L	Every 6 Months	0*	-	-	-	-	-	-
	pH	pH	Every 6 Months	0*	-	-	-	-	-	-
	Phosphorus (Total)	mg/L	Every 6 Months	0*	-	-	-	-	-	-
	Reactive Phosphorus	mg/L	Every 6 Months	0*	-	-	-	-	-	-
	Standing Water Level	Metres	Every 6 Months	0*	-	-	-	-	-	-

TLTS – too low to sample

## WERRIS CREEK COAL EPL – MONTHLY SUMMARY

\*This reporting period does not include measurements for the 6 monthly or 3 monthly monitoring as they did not occur in this period. These will be reported in their relevant periods.

**Table 4 – Monitoring (Noise – Limits Apply)**

Location	Date	Measurement Period	Start Time	Measured levels – dB(A)		Limit(s)	Weather (Inversion °C/100m & / Wind m/s / Wind Direction °)	Observations	(Potential) Non-compliance /breach	Date Obtained
				LA1, 1 Minute	LAeq, 15 Minute					
<b>R24</b>	27 February 2024	60 minutes	9:41am	N/A	48	46	3.4 / 066	Traffic (48), birds (31), insects (23), <b>WCC (&lt;20)</b>	No	20/03/2024
<b>R12</b>	27 February 2024	60 minutes	12:47pm	N/A	39	36	2.4 / 026	Insects (39), traffic (27), <b>WCC (&lt;20)</b>	No	20/03/2024
<b>R96</b>	27 February 2024	60 minutes	9:59am	N/A	47	43	2.7 / 072	Insects (46), birds (40), <b>WCC (&lt;20)</b>	No	20/03/2024
<b>R98</b>	27 February 2024	60 minutes	11:14am	N/A	35	49	2.1 / 077	Birds (34), aeroplanes (24), insects (23), <b>WCC (&lt;20)</b>	No	20/03/2024
<b>R57</b>	27 February 2024	60 minutes	1:04pm	N/A	47	40	1.1 / 348	Traffic (44), birds (43), <b>WCC (&lt;20)</b>	No	20/03/2024
<b>R24</b>	28 February 2024	60 minutes	9:10pm	<20	46	46	Lapse / 2.3 / 143	Traffic (45), insects (39), <b>WCC (&lt;20)</b>	No	20/03/2024
<b>R12</b>	28 February 2024	60 minutes	7:17pm	<20	36	36	Lapse / 4.7 / 151	Birds (33), insects (32), traffic (24), <b>WCC (&lt;20)</b>	No	20/03/2024
<b>R96</b>	28 February 2024	60 minutes	8:44pm	<20	43	43	Lapse / 3.3 / 137	Insects (43), dog (23), <b>WCC (&lt;20)</b>	No	20/03/2024
<b>R98</b>	28 February 2024	60 minutes	9:52pm	<20	49	49	Lapse / 1.3 / 168	Insects (49), birds (23), <b>WCC (&lt;20)</b>	No	20/03/2024
<b>R57</b>	28 February 2024	60 minutes	11:54pm	<20	40	40	Lapse / 0.9 / 179	Traffic (38), insects (34), dogs (27), <b>WCC (&lt;20)</b>	No	20/03/2024

**NM = Not Measurable. This denotes noise from the mine was audible at low levels however cannot be quantified.**

**IA = Inaudible.**

<sup>1</sup> Crawford's Freightlines Werris Creek

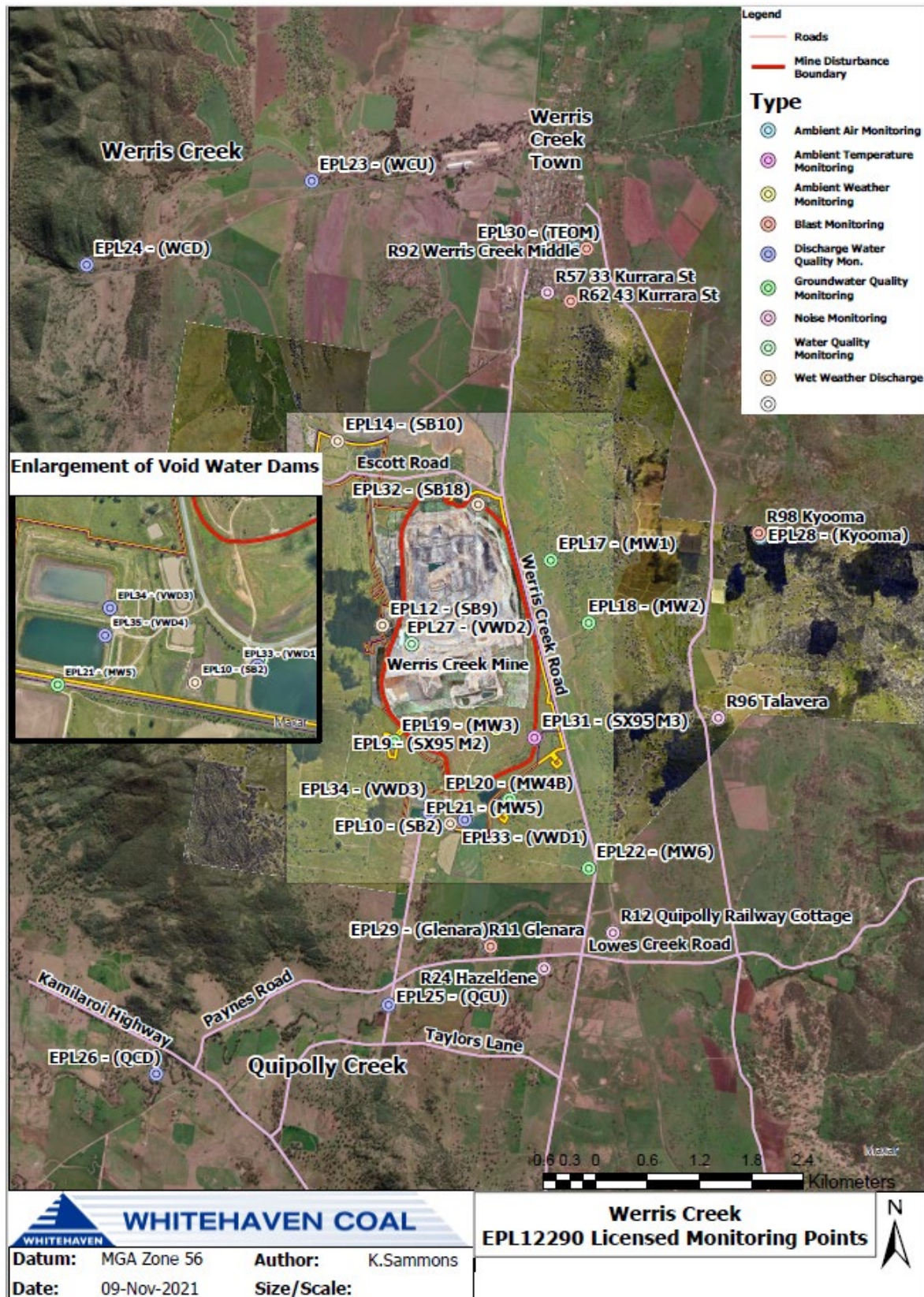
**WERRIS CREEK COAL EPL – MONTHLY SUMMARY**
**Table 5 – Monitoring (Blasts – Limits Apply)**

Location	Parameter	Units of Measure	Frequency	No. of Blasts for the Month	Average Value	Max Value	100%ile Limit	(Potential) Non-compliance /breach	Date Obtained
R11	Blast Noise	dB (Lin Peak)	Every Blast	3	95.1	96.9	120.0	No	01/03/2024
	Blast Vibration	mm/s	Every Blast	3	0.05	0.06	10.0	No	01/03/2024
R98	Blast Noise	dB (Lin Peak)	Every Blast	3	94.9	95.1	120.0	No	01/03/2024
	Blast Vibration	mm/s	Every Blast	3	0.63	0.75	10.0	No	01/03/2024
R62	Blast Noise	dB (Lin Peak)	Every Blast	3	98.1	100.9	120.0	No	01/03/2024
	Blast Vibration	mm/s	Every Blast	3	0.29	0.32	10.0	No	01/03/2024
R92	Blast Noise	dB (Lin Peak)	Every Blast	3	93.6	95.2	120.0	No	01/03/2024
	Blast Vibration	mm/s	Every Blast	3	0.15	0.17	10.0	No	01/03/2024





## WERRIS CREEK COAL EPL – MONTHLY SUMMARY



## WERRIS CREEK COAL EPL – MONTHLY SUMMARY

### Site Information

**EPL No.:** 12290

**EPA Website Link:** <http://www.epa.nsw.gov.au/prpoeoapp/ViewPOEOLicence.aspx?DOCID=31280&SYSUID=1&LICID=12290>

**Licensee:** Werris Creek Coal Pty Limited

**Premises:** Werris Creek Coal, 1435 Werris Creek Road, WERRIS CREEK NSW 2341

**EPL Monitoring Points:** See figure at end of document

**Sampling Period:** MARCH 2024

**Obtained Date:** 26/04/2024

**Publication Date:** 26/04/2024

**Table 1 - No Pollutant Limits Apply**

EPL ID	Pollutant	Units of Measure	Monitoring Frequency	No. of Measurements for the Month	Date Sampled	Date Obtained	Min Value	Mean Value	Median Value	Max Value
28	PM10	µg/m <sup>3</sup>	Every 6 days	6	30/03/2024	11/04/2024	2.0	6.4	8.4	8.5
	Solid Particles	g/m <sup>2</sup> /month	Continuous	1	18/03/2024	26/04/2024	0.5	0.5	0.5	0.5
29	PM10	µg/m <sup>3</sup>	Every 6 days	6	30/03/2024	11/04/2024	3.2	17.0	20.5	29.4
	Solid Particles	g/m <sup>2</sup> /month	Continuous	1	18/03/2024	26/04/2024	1.0	1.0	1.0	1.0
30	PM10	µg/m <sup>3</sup>	Continuous	Continuous	31/03/2024	09/04/2024	5.1	11.4	10.0	30.1
	Solid Particles	g/m <sup>2</sup> /month	Continuous	1	18/03/2024	26/04/2024	0.5	0.5	0.5	0.5
10	Conductivity	µS/cm	Special Frequency 1	0*	-	-	-	-	-	-
	Nitrate	mg/L	Special Frequency 1	0*	-	-	-	-	-	-
	Nitrogen (Total)	mg/L	Special Frequency 1	0*	-	-	-	-	-	-
	Phosphorus (Total)	mg/L	Special Frequency 1	0*	-	-	-	-	-	-
	Reactive Phosphorus	mg/L	Special Frequency 1	0*	-	-	-	-	-	-
12	Conductivity	µS/cm	Special Frequency 1	0*	-	-	-	-	-	-
	Nitrate	mg/L	Special Frequency 1	0*	-	-	-	-	-	-
	Nitrogen (Total)	mg/L	Special Frequency 1	0*	-	-	-	-	-	-
	Phosphorus (Total)	mg/L	Special Frequency 1	0*	-	-	-	-	-	-

**WERRIS CREEK COAL EPL – MONTHLY SUMMARY**

EPL ID	Pollutant	Units of Measure	Monitoring Frequency	No. of Measurements for the Month	Date Sampled	Date Obtained	Min Value	Mean Value	Median Value	Max Value
	Reactive Phosphorus	mg/L	Special Frequency 1	0*	-	-	-	-	-	-
14	Conductivity	µS/cm	Special Frequency 1	0*	-	-	-	-	-	-
	Nitrate	mg/L	Special Frequency 1	0*	-	-	-	-	-	-
	Nitrogen (Total)	mg/L	Special Frequency 1	0*	-	-	-	-	-	-
	Phosphorus (Total)	mg/L	Special Frequency 1	0*	-	-	-	-	-	-
	Reactive Phosphorus	mg/L	Special Frequency 1	0*	-	-	-	-	-	-
32	Conductivity	µS/cm	Special Frequency 1	0*	-	-	-	-	-	-
	Nitrate	mg/L	Special Frequency 1	0*	-	-	-	-	-	-
	Nitrogen (Total)	mg/L	Special Frequency 1	0*	-	-	-	-	-	-
	Oil and Grease	mg/L	Special Frequency 1	0*	-	-	-	-	-	-
	pH	pH	Special Frequency 1	0*	-	-	-	-	-	-
	Phosphorus (Total)	mg/L	Special Frequency 1	0*	-	-	-	-	-	-
	Reactive Phosphorus	mg/L	Special Frequency 1	0*	-	-	-	-	-	-
23	Total Suspended Solids	mg/L	Special Frequency 1	0*	-	-	-	-	-	-
	Conductivity	µS/cm	Special Frequency 2	0*	-	-	-	-	-	-
	Nitrate	mg/L	Special Frequency 2	0*	-	-	-	-	-	-
	Nitrogen (Total)	mg/L	Special Frequency 2	0*	-	-	-	-	-	-
	Oil and Grease	mg/L	Special Frequency 2	0*	-	-	-	-	-	-
	pH	pH	Special Frequency 2	0*	-	-	-	-	-	-
	Phosphorus (Total)	mg/L	Special Frequency 2	0*	-	-	-	-	-	-
24	Reactive Phosphorus	mg/L	Special Frequency 2	0*	-	-	-	-	-	-
	Total Suspended Solids	mg/L	Special Frequency 2	0*	-	-	-	-	-	-
	Conductivity	µS/cm	Special Frequency 2	0*	-	-	-	-	-	-
24	Nitrate	mg/L	Special Frequency 2	0*	-	-	-	-	-	-
	Nitrogen (Total)	mg/L	Special Frequency 2	0*	-	-	-	-	-	-



**WERRIS CREEK COAL EPL – MONTHLY SUMMARY**

EPL ID	Pollutant	Units of Measure	Monitoring Frequency	No. of Measurements for the Month	Date Sampled	Date Obtained	Min Value	Mean Value	Median Value	Max Value
	Oil and Grease	mg/L	Special Frequency 2	0*	-	-	-	-	-	-
	pH	pH	Special Frequency 2	0*	-	-	-	-	-	-
	Phosphorus (Total)	mg/L	Special Frequency 2	0*	-	-	-	-	-	-
	Reactive Phosphorus	mg/L	Special Frequency 2	0*	-	-	-	-	-	-
	Total Suspended Solids	mg/L	Special Frequency 2	0*	-	-	-	-	-	-
25	Conductivity	µS/cm	Special Frequency 2	0*	-	-	-	-	-	-
	Nitrate	mg/L	Special Frequency 2	0*	-	-	-	-	-	-
	Nitrogen (Total)	mg/L	Special Frequency 2	0*	-	-	-	-	-	-
	Oil and Grease	mg/L	Special Frequency 2	0*	-	-	-	-	-	-
	pH	pH	Special Frequency 2	0*	-	-	-	-	-	-
	Phosphorus (Total)	mg/L	Special Frequency 2	0*	-	-	-	-	-	-
	Reactive Phosphorus	mg/L	Special Frequency 2	0*	-	-	-	-	-	-
26	Total Suspended Solids	mg/L	Special Frequency 2	0*	-	-	-	-	-	-
	Conductivity	µS/cm	Special Frequency 2	0*	-	-	-	-	-	-
	Nitrate	mg/L	Special Frequency 2	0*	-	-	-	-	-	-
	Nitrogen (Total)	mg/L	Special Frequency 2	0*	-	-	-	-	-	-
	Oil and Grease	mg/L	Special Frequency 2	0*	-	-	-	-	-	-
	pH	pH	Special Frequency 2	0*	-	-	-	-	-	-
	Phosphorus (Total)	mg/L	Special Frequency 2	0*	-	-	-	-	-	-
	Reactive Phosphorus	mg/L	Special Frequency 2	0*	-	-	-	-	-	-
33	Aluminium (dissolved)	mg/L	Special Frequency 3	0*	-	-	-	-	-	-
	Arsenic (dissolved)	mg/L	Special Frequency 3	0*	-	-	-	-	-	-

**WERRIS CREEK COAL EPL – MONTHLY SUMMARY**

EPL ID	Pollutant	Units of Measure	Monitoring Frequency	No. of Measurements for the Month	Date Sampled	Date Obtained	Min Value	Mean Value	Median Value	Max Value
	Barium (dissolved)	mg/L	Special Frequency 3	0*	-	-	-	-	-	-
	Beryllium (dissolved)	mg/L	Special Frequency 3	0*	-	-	-	-	-	-
	BOD	mg/L	Special Frequency 3	0*	-	-	-	-	-	-
	Cadmium (dissolved)	mg/L	Special Frequency 3	0*	-	-	-	-	-	-
	Chromium (dissolved)	mg/L	Special Frequency 3	0*	-	-	-	-	-	-
	Cobalt (dissolved)	mg/L	Special Frequency 3	0*	-	-	-	-	-	-
	Copper (dissolved)	mg/L	Special Frequency 3	0*	-	-	-	-	-	-
	Iron (dissolved)	mg/L	Special Frequency 3	0*	-	-	-	-	-	-
	Lead (dissolved)	mg/L	Special Frequency 3	0*	-	-	-	-	-	-
	Magnesium	mg/L	Special Frequency 3	0*	-	-	-	-	-	-
	Manganese (dissolved)	mg/L	Special Frequency 3	0*	-	-	-	-	-	-
	Nickel (dissolved)	mg/L	Special Frequency 3	0*	-	-	-	-	-	-
	Potassium	mg/L	Special Frequency 3	0*	-	-	-	-	-	-
	Selenium (dissolved)	mg/L	Special Frequency 3	0*	-	-	-	-	-	-
	Sodium	mg/L	Special Frequency 3	0*	-	-	-	-	-	-
	Total dissolved solids	mg/L	Special Frequency 3	0*	-	-	-	-	-	-
	Vanadium (dissolved)	mg/L	Special Frequency 3	0*	-	-	-	-	-	-
	Zinc (dissolved)	mg/L	Special Frequency 3	0*	-	-	-	-	-	-
34	Aluminium (dissolved)	mg/L	Special Frequency 3	0*	-	-	-	-	-	-
	Arsenic (dissolved)	mg/L	Special Frequency 3	0*	-	-	-	-	-	-
	Barium (dissolved)	mg/L	Special Frequency 3	0*	-	-	-	-	-	-
	Beryllium (dissolved)	mg/L	Special Frequency 3	0*	-	-	-	-	-	-
	BOD	mg/L	Special Frequency 3	0*	-	-	-	-	-	-
	Cadmium (dissolved)	mg/L	Special Frequency 3	0*	-	-	-	-	-	-
	Chromium (dissolved)	mg/L	Special Frequency 3	0*	-	-	-	-	-	-



**WERRIS CREEK COAL EPL – MONTHLY SUMMARY**

EPL ID	Pollutant	Units of Measure	Monitoring Frequency	No. of Measurements for the Month	Date Sampled	Date Obtained	Min Value	Mean Value	Median Value	Max Value
	Cobalt (dissolved)	mg/L	Special Frequency 3	0*	-	-	-	-	-	-
	Copper (dissolved)	mg/L	Special Frequency 3	0*	-	-	-	-	-	-
	Iron (dissolved)	mg/L	Special Frequency 3	0*	-	-	-	-	-	-
	Lead (dissolved)	mg/L	Special Frequency 3	0*	-	-	-	-	-	-
	Magnesium	mg/L	Special Frequency 3	0*	-	-	-	-	-	-
	Manganese (dissolved)	mg/L	Special Frequency 3	0*	-	-	-	-	-	-
	Nickel (dissolved)	mg/L	Special Frequency 3	0*	-	-	-	-	-	-
	Potassium	mg/L	Special Frequency 3	0*	-	-	-	-	-	-
	Selenium (dissolved)	mg/L	Special Frequency 3	0*	-	-	-	-	-	-
	Sodium	mg/L	Special Frequency 3	0*	-	-	-	-	-	-
	Total dissolved solids	mg/L	Special Frequency 3	0*	-	-	-	-	-	-
	Vanadium (dissolved)	mg/L	Special Frequency 3	0*	-	-	-	-	-	-
	Zinc (dissolved)	mg/L	Special Frequency 3	0*	-	-	-	-	-	-
35	Aluminium (dissolved)	mg/L	Special Frequency 3	0*	-	-	-	-	-	-
	Arsenic (dissolved)	mg/L	Special Frequency 3	0*	-	-	-	-	-	-
	Barium (dissolved)	mg/L	Special Frequency 3	0*	-	-	-	-	-	-
	Beryllium (dissolved)	mg/L	Special Frequency 3	0*	-	-	-	-	-	-
	BOD	mg/L	Special Frequency 3	0*	-	-	-	-	-	-
	Cadmium (dissolved)	mg/L	Special Frequency 3	0*	-	-	-	-	-	-
	Chromium (dissolved)	mg/L	Special Frequency 3	0*	-	-	-	-	-	-
	Cobalt (dissolved)	mg/L	Special Frequency 3	0*	-	-	-	-	-	-
	Copper (dissolved)	mg/L	Special Frequency 3	0*	-	-	-	-	-	-
	Iron (dissolved)	mg/L	Special Frequency 3	0*	-	-	-	-	-	-
	Lead (dissolved)	mg/L	Special Frequency 3	0*	-	-	-	-	-	-
	Magnesium	mg/L	Special Frequency 3	0*	-	-	-	-	-	-

**WERRIS CREEK COAL EPL – MONTHLY SUMMARY**

EPL ID	Pollutant	Units of Measure	Monitoring Frequency	No. of Measurements for the Month	Date Sampled	Date Obtained	Min Value	Mean Value	Median Value	Max Value
	Manganese (dissolved)	mg/L	Special Frequency 3	0*	-	-	-	-	-	-
	Nickel (dissolved)	mg/L	Special Frequency 3	0*	-	-	-	-	-	-
	Potassium	mg/L	Special Frequency 3	0*	-	-	-	-	-	-
	Selenium (dissolved)	mg/L	Special Frequency 3	0*	-	-	-	-	-	-
	Sodium	mg/L	Special Frequency 3	0*	-	-	-	-	-	-
	Total dissolved solids	mg/L	Special Frequency 3	0*	-	-	-	-	-	-
	Vanadium (dissolved)	mg/L	Special Frequency 3	0*	-	-	-	-	-	-
	Zinc (dissolved)	mg/L	Special Frequency 3	0*	-	-	-	-	-	-

<sup>1</sup>NS – No sample.

**Table 2 - Pollutant Limits Apply**

EPL ID	Pollutant	Units of Measure	Monitoring Frequency	No. of samples for the Month	Date Sampled	Date Obtained	Min Value	Max Value	100%ile Limit	Exceedance (Yes/No)	Comments
10	Total Suspended Solids	mg/L	Special Frequency 1	0*	-	-	-	-	50~	No	
	Oil and Grease	mg/L	Special Frequency 1	0*	-	-	-	-	10	No	
	pH	pH	Special Frequency 1	0*	-	-	-	-	6.5-8.5	No	
12	Total Suspended Solids	mg/L	Special Frequency 1	0*	-	-	-	-	50~	No	
	Oil and Grease	mg/L	Special Frequency 1	0*	-	-	-	-	10	No	
	pH	pH	Special Frequency 1	0*	-	-	-	-	6.5-8.5	No	

**WERRIS CREEK COAL EPL – MONTHLY SUMMARY**

EPL ID	Pollutant	Units of Measure	Monitoring Frequency	No. of samples for the Month	Date Sampled	Date Obtained	Min Value	Max Value	100%ile Limit	Exceedance (Yes/No)	Comments
14	Total Suspended Solids	mg/L	Special Frequency 1	0*	-	-	-	-	50~	No	
	Oil and Grease	mg/L	Special Frequency 1	0*	-	-	-	-	10	No	
	pH	pH	Special Frequency 1	0*	-	-	-	-	6.5-8.5	No	
32	Total Suspended Solids	mg/L	Special Frequency 1	0*	-	-	-	-	2000	No	
	Oil and Grease	mg/L	Special Frequency 1	0*	-	-	-	-	10	No	
	pH	pH	Special Frequency 1	0*	-	-	-	-	9	No	
33	Electrical Conductivity	µS/cm	Special Frequency 4	0*	-	-	-	-	2000	No	
	Oil and Grease	mg/L	Special Frequency 3	0*	-	-	-	-	10	No	
	pH	pH	Special Frequency 4	0*	-	-	-	-	9	No	
34	Electrical Conductivity	µS/cm	Special Frequency 4	0*	-	-	-	-	2000	No	
	Oil and Grease	mg/L	Special Frequency 3	0*	-	-	-	-	10	No	
	pH	pH	Special Frequency 4	0*	-	-	-	-	9	No	
35	Electrical Conductivity	µS/cm	Special Frequency 4	2	14/3 & 26/03/2024	31/03/2024	1711	1971	2000	No	
	Oil and Grease	mg/L	Special Frequency 3	1	27/02/2024	21/03/2024	<5	<5	10	No	
	pH	pH	Special Frequency 4	2	14/3 & 26/03/2024	31/03/2024	8.01	8.21	9	No	

~ Total Suspended Solids permitted to exceed 50mg/L if 5 day rainfall is greater than 39.2mm prior to discharge

\*No Special Frequency Events occurred during Sampling Period, therefore no data has been collected.

#The discharge sample was inconsistent with pre-discharge sampling of the dam and has been discussed with the EPA. This will be documented in the Annual Return.

- For the purposes of this condition, Special Frequency 1 means as soon as practicable after overflow commences and in any case not more than 12 hours after any overflow commencing.
- For the purposes of this condition, Special Frequency 2 means within 12 hours after any overflow from a storage dam(s) on the premises occurring.



### **WERRIS CREEK COAL EPL – MONTHLY SUMMARY**

- For the purposes of this condition, Special Frequency 3 means every three months. If no mine void water is planned to be provided for agricultural purposes within the three months following scheduled sampling, then sampling is not required.
- For the purposes of this condition, Special Frequency 4 means prior to, but not more than 24 hours prior to providing mine void water for agricultural purposes and then weekly thereafter, until the provision of water ceases. Samples are only required to be taken from the void water dam that is supplying water for agricultural purposes.

**WERRIS CREEK COAL EPL – MONTHLY SUMMARY**
**Table 3 – Monitoring (Quarterly & 6 monthly – no limits apply)**

EPL ID	Pollutant	Units of Measure	Monitoring Frequency	No. of Measurements for the Period	Date Sampled	Date Obtained	Min Value	Mean Value	Median Value	Max Value
16	Conductivity	µS/cm	Every 3 Months	0*	-	-	-	-	-	-
	Nitrate	mg/L	Every 3 Months	0*	-	-	-	-	-	-
	Nitrogen (Total)	mg/L	Every 3 Months	0*	-	-	-	-	-	-
	Oil and Grease	mg/L	Every 3 Months	0*	-	-	-	-	-	-
	pH	pH	Every 3 Months	0*	-	-	-	-	-	-
	Phosphorus (Total)	mg/L	Every 3 Months	0*	-	-	-	-	-	-
	Reactive Phosphorus	mg/L	Every 3 Months	0*	-	-	-	-	-	-
27	Total Suspended Solids	mg/L	Every 3 Months	0*	-	-	-	-	-	-
	Conductivity	µS/cm	Every 3 Months	0*	-	-	-	-	-	-
	Nitrate	mg/L	Every 3 Months	0*	-	-	-	-	-	-
	Nitrogen (Total)	mg/L	Every 3 Months	0*	-	-	-	-	-	-
	Oil and Grease	mg/L	Every 3 Months	0*	-	-	-	-	-	-
	pH	pH	Every 3 Months	0*	-	-	-	-	-	-
	Phosphorus (Total)	mg/L	Every 3 Months	0*	-	-	-	-	-	-
17	Reactive Phosphorus	mg/L	Every 3 Months	0*	-	-	-	-	-	-
	Total Suspended Solids	mg/L	Every 3 Months	0*	-	-	-	-	-	-
	Conductivity	µS/cm	Every 6 Months	1	20/03/2024	28/03/2024	474	474	474	474
	Nitrate	mg/L	Every 6 Months	1	20/03/2024	28/03/2024	<0.01	<0.01	<0.01	<0.01
	Nitrogen (Total)	mg/L	Every 6 Months	1	20/03/2024	28/03/2024	1.2	1.2	1.2	1.2
	pH	pH	Every 6 Months	1	20/03/2024	28/03/2024	7.54	7.54	7.54	7.54

**WERRIS CREEK COAL EPL – MONTHLY SUMMARY**

EPL ID	Pollutant	Units of Measure	Monitoring Frequency	No. of Measurements for the Period	Date Sampled	Date Obtained	Min Value	Mean Value	Median Value	Max Value
	Phosphorus (Total)	mg/L	Every 6 Months	1	20/03/2024	28/03/2024	0.22	0.22	0.22	0.22
	Reactive Phosphorus	mg/L	Every 6 Months	1	20/03/2024	28/03/2024	Lab error – follow up sample results will be reported in April			
	Standing Water Level	Metres	Every 6 Months	1	20/03/2024	28/03/2024	57.48	57.48	57.48	57.48
18	Conductivity	µS/cm	Every 6 Months	0	12/03/2024	20/03/2024	No sample – no power to pump			
	Nitrate	mg/L	Every 6 Months	0	12/03/2024	20/03/2024	No sample – no power to pump			
	Nitrogen (Total)	mg/L	Every 6 Months	0	12/03/2024	20/03/2024	No sample – no power to pump			
	pH	pH	Every 6 Months	0	12/03/2024	20/03/2024	No sample – no power to pump			
	Phosphorus (Total)	mg/L	Every 6 Months	0	12/03/2024	20/03/2024	No sample – no power to pump			
	Reactive Phosphorus	mg/L	Every 6 Months	0	12/03/2024	20/03/2024	No sample – no power to pump			
	Standing Water Level	Metres	Every 6 Months	1	12/03/2024	20/03/2024	29.7	29.7	29.7	29.7
19	Conductivity	µS/cm	Every 6 Months	1	26/03/2024	7/04/2024	2390	2390	2390	2390
	Nitrate	mg/L	Every 6 Months	1	26/03/2024	7/04/2024	11.6	11.6	11.6	11.6
	Nitrogen (Total)	mg/L	Every 6 Months	1	26/03/2024	7/04/2024	13	13	13	13
	pH	pH	Every 6 Months	1	26/03/2024	7/04/2024	7.95	7.95	7.95	7.95
	Phosphorus (Total)	mg/L	Every 6 Months	1	26/03/2024	7/04/2024	0.08	0.08	0.08	0.08
	Reactive Phosphorus	mg/L	Every 6 Months	1	26/03/2024	7/04/2024	0.07	0.07	0.07	0.07
	Standing Water Level	Metres	Every 6 Months	1	26/03/2024	7/04/2024	15.73	15.73	15.73	15.73
20	Conductivity	µS/cm	Every 6 Months	1	27/03/2024	8/04/2024	926	926	926	926
	Nitrate	mg/L	Every 6 Months	1	27/03/2024	8/04/2024	0.42	0.42	0.42	0.42
	Nitrogen (Total)	mg/L	Every 6 Months	1	27/03/2024	8/04/2024	0.8	0.8	0.8	0.8
	pH	pH	Every 6 Months	1	27/03/2024	8/04/2024	7.83	7.83	7.83	7.83

**WERRIS CREEK COAL EPL – MONTHLY SUMMARY**

EPL ID	Pollutant	Units of Measure	Monitoring Frequency	No. of Measurements for the Period	Date Sampled	Date Obtained	Min Value	Mean Value	Median Value	Max Value
	Phosphorus (Total)	mg/L	Every 6 Months	1	27/03/2024	8/04/2024	0.26	0.26	0.26	0.26
	Reactive Phosphorus	mg/L	Every 6 Months	1	27/03/2024	8/04/2024	0.22	0.22	0.22	0.22
	Standing Water Level	Metres	Every 6 Months	1	27/03/2024	8/04/2024	13.1	13.1	13.1	13.1
21	Conductivity	µS/cm	Every 6 Months	1	26/03/2024	7/04/2024	2180	2180	2180	2180
	Nitrate	mg/L	Every 6 Months	1	26/03/2024	7/04/2024	2.56	2.56	2.56	2.56
	Nitrogen (Total)	mg/L	Every 6 Months	1	26/03/2024	7/04/2024	3	3	3	3
	pH	pH	Every 6 Months	1	26/03/2024	7/04/2024	7.92	7.92	7.92	7.92
	Phosphorus (Total)	mg/L	Every 6 Months	1	26/03/2024	7/04/2024	0.4	0.4	0.4	0.4
	Reactive Phosphorus	mg/L	Every 6 Months	1	26/03/2024	7/04/2024	0.39	0.39	0.39	0.39
	Standing Water Level	Metres	Every 6 Months	1	26/03/2024	7/04/2024	9.18	9.18	9.18	9.18
22	Conductivity	µS/cm	Every 6 Months	1	11/03/2024	21/03/2024	1650	1650	1650	1650
	Nitrate	mg/L	Every 6 Months	1	11/03/2024	21/03/2024	3.54	3.54	3.54	3.54
	Nitrogen (Total)	mg/L	Every 6 Months	1	11/03/2024	21/03/2024	4.2	4.2	4.2	4.2
	pH	pH	Every 6 Months	1	11/03/2024	21/03/2024	7.91	7.91	7.91	7.91
	Phosphorus (Total)	mg/L	Every 6 Months	1	11/03/2024	21/03/2024	0.12	0.12	0.12	0.12
	Reactive Phosphorus	mg/L	Every 6 Months	1	11/03/2024	21/03/2024	0.09	0.09	0.09	0.09
	Standing Water Level	Metres	Every 6 Months	1	11/03/2024	21/03/2024	13.62	13.62	13.62	13.62

TLTS – too low to sample

\*This reporting period does not include measurements for the 6 monthly or 3 monthly monitoring as they did not occur in this period. These will be reported in their relevant periods.

## WERRIS CREEK COAL EPL – MONTHLY SUMMARY

**Table 4 – Monitoring (Noise – Limits Apply)**

Location	Date	Measurement Period	Start Time	Measured levels – dB(A)		Limit(s)	Weather (Inversion °C/100m & / Wind m/s / Wind Direction °)	Observations	(Potential) Non-compliance /breach	Date Obtained
				LA1, 1 Minute	LAeq, 15 Minute					
R24	20 March 2024	60 minutes	11:05am	N/A	51	Day 37	4.7 / 167	Traffic (50), birds (42), insects (31), <b>WCC (&lt;20)</b>	No	18/04/2024
R12	20 March 2024	60 minutes	12:09pm	N/A	52	Day 38	4.5 / 168	Train (51), traffic (45), birds (35), insects (32), <b>WCC (&lt;20)</b>	No	18/04/2024
R96	20 March 2024	60 minutes	1:33pm	N/A	43	Day 38	4.1 / 155	Birds (43), traffic (30), <b>WCC (&lt;20)</b>	No	18/04/2024
R98	20 March 2024	60 minutes	2:43pm	N/A	53	Day 35	5.2 / 173	Birds (52), insects (47), traffic (32), <b>WCC (&lt;20)</b>	No	18/04/2024
R57	20 March 2024	60 minutes	4:46pm	N/A	51	Day 35	4.0 / 142	Traffic (51), insects (37), birds (36), <b>WCC (&lt;20)</b>	No	18/04/2024
R24	20 March 2024	60 minutes	8:54pm	<20	34	Night 37	<+12.0 <sup>1</sup> / 2.6 / 139	Traffic (33), insects (28), <b>WCC (&lt;20)</b>	No	18/04/2024
R12	20 March 2024	60 minutes	10:01pm	<20	35	Night 38	<+12.0 <sup>1</sup> / 2.3 / 150	Traffic (34), insects (26), <b>WCC (&lt;20)</b>	No	18/04/2024
R96	20 March 2024	60 minutes	11:08pm	<20	28	Night 37	<+12.0 <sup>1</sup> / 2.2 / 159	Insects (28), <b>WCC (&lt;20)</b>	No	18/04/2024
R98	21 March 2024	60 minutes	12:15am	<20	33	Night 35	<+12.0 <sup>1</sup> / 2.0 / 192	Insects (33), <b>WCC (&lt;20)</b>	No	18/04/2024
R57	20 March 2024	60 minutes	9:49pm	34	45	Night 35	<+12.0 <sup>1</sup> / 1.5 / 131	Train (44), insects (33), <b>WCC (30)</b> , traffic (27)	No	18/04/2024

**NM = Not Measurable. This denotes noise from the mine was audible at low levels however cannot be quantified.**

**IA = Inaudible.**

<sup>1</sup> Temperature data malfunction – Compliant temperature inversion conditions assumed conservatively



**WERRIS CREEK COAL EPL – MONTHLY SUMMARY**
**Table 5 – Monitoring (Blasts – Limits Apply)**

Location	Parameter	Units of Measure	Frequency	No. of Blasts for the Month	Average Value	Max Value	100%ile Limit	(Potential) Non-compliance /breach	Date Obtained
R11	Blast Noise	dB (Lin Peak)	Every Blast	-	-	-	120.0	-	-
	Blast Vibration	mm/s	Every Blast	-	-	-	10.0	-	-
R98	Blast Noise	dB (Lin Peak)	Every Blast	-	-	-	120.0	-	-
	Blast Vibration	mm/s	Every Blast	-	-	-	10.0	-	-
R62	Blast Noise	dB (Lin Peak)	Every Blast	-	-	-	120.0	-	-
	Blast Vibration	mm/s	Every Blast	-	-	-	10.0	-	-
R92	Blast Noise	dB (Lin Peak)	Every Blast	-	-	-	120.0	-	-
	Blast Vibration	mm/s	Every Blast	-	-	-	10.0	-	-

## WERRIS CREEK COAL EPL – MONTHLY SUMMARY

